

SECTION A - HORSES

Enquiries: Jane Gerber (0431 136 999)
& Rebecca Gerber (0413 725 236)

Entry Fees:	Competitor Pass Holders	\$ 4.00 per entry
	Others	\$ 5.00 per entry
	Competitor Pass	\$30.00

There will be no extra charge for late entries in 2019 - entries can be made on Show Day. Each exhibitor must complete an entry form with relevant details and will then receive a card with a number which will identify them in all classes they enter. If competing in a Rider class, each rider must have a number .
If exhibiting more than one horse, a separate number will be required for each horse. An Entries Caravan will be located near the entry to the grounds on Show Day.

Anyone wishing to purchase a Competitor Pass must apply by mail (enclosing a **stamped addressed envelope**) and this pass will be posted back. All such requests **must** be received no later than 29th September 2019 to allow sufficient time for return postage.

You can also enter On Line: www.nominate.com.au/equest, then select "Show Horse Events", & then select Sunbury Agric. Show.

REGULATIONS:

1. No horses can be warmed-up or exercised on the arena - a separate area will be allocated for this.
2. Children competing **MUST** produce on request a certificate of age from teacher or guardian.
3. Trophies must be collected on day of Show at the Secretary's Office after 2.00pm
4. In any class it will be left to the judge's discretion to award a First Prize
5. Protests against awards must be lodged with the Secretary in writing within 30 minutes after such awards are made, with a deposit of \$20.00. The Committee with or without the judge's advice will decide the question, which decision will be final. If the protest is dismissed and deemed frivolous, deposit may be forfeited.
6. Where height is stipulated, E.A. Height Certificates will be accepted but the Committee reserves the right to measure any horse or pony at any time.
7. Any stallion present on the Showgrounds must have a bit in its mouth, or chain controlling halter.
8. Newcomer means never to have been shown under saddle in any discipline before 1/1/2019.
9. A competitor must choose to enter in classes as either a Show Hunter or a Show Horse, but not enter both. Once a horse has competed as a Show Horse or a Show Hunter at its first VAS event in a calendar year, it must remain as a Show Horse or a Show Hunter at VAS competitions for that calendar year.
10. Once a horse has successfully won a Champion in its first ring it cannot continue to compete in that equivalent section in other rings during the Show. First place getters are eligible to compete in multiple rings until successful as Champion.
11. The Committee reserves the right to alter or cancel any event.
12. Breed Classes - Entries must be registered with respective Societies and Stud Books as in R.A.S Schedule. If requested, registration papers must be produced for scrutiny.
13. No stallion shall be permitted in Open Saddle Classes.
14. Random swabbing may take place under V.A.S.L. and E.F.A. Rules.
15. All manure **must** be picked up and placed in bags which will be supplied for all horse entrants. Manure does not need to be taken home on the day.

The Anthony McMahon Award for the Champion Newcomer Hack/Galloway/Pony will be made in Ring 2. The Doug Tremlett Award for Supreme Junior Rider and the William Aitken Award for Supreme Intermediate Rider will be made in Ring 3.

**VAS Ltd SADDLE HORSE
CHAMPIONSHIPS**

Saturday 4th & Sunday 5th January 2020.
Prince of Wales Showgrounds, Bendigo

For further information contact the VAS Ltd. office
Phone: 03 5441 5555

Website: www.vicagshows.com.au
Email: info@vicagshows.com.au

Facebook: www.facebook.com/VictorianShows

**PERRY'S PRODUCE SUNBURY
(SINCE 1982)**

**1 Harker Street
SUNBURY 3429**

PHONE: 9744.5052

- Horse Feed**
- Chaff**
- Hay & Straw**
- Poultry Feed**
- Cattle & Sheep Feed**
- Bird & Pigeon Feed**
- Horse Supplements**
- Point of Lay Chickens**
- Pasture Seed & Weed Control**
- Electric Fencing & Gas Supplies**

Lunch for Judges and Stewards will be available in the McMahon Pavilion Dining Room between 12.00 pm and 1.30 pm. All judges and Stewards to break for lunch - the only exceptions will be the Harness classes and the Topsy Ring.

COMPETITORS PLEASE NOTE EVENTS WILL NOT BE HELD OVER IF CLASSES CLASH. ALL COMPETITORS RIDE ENTIRELY AT THEIR OWN RISK. GROUND STEWARDS HAVE THE POWER TO EVICT HORSES NOT PROPERLY RESTRAINED WHILST ON SHOWGROUNDS

NO CASH PRIZE MONEY EXCEPT WHERE STATED.

Ring 1 OPEN CLASSES

9.30 am start Judge: Kim Bilton

<u>Class</u>	<u>Description</u>
1.	Led Small Open Hack 15h & not over 16h
2.	Led Small Hunter Hack 15h & not over 16h
3.	Led Large Open Hack over 16h
4.	Led Large Hunter Hack over 16h
	CHAMPION & RESERVE CHAMPION LED HACK
5.	Led Open Galloway 14h & not over 15h
6.	Led Hunter Galloway 14h & not over 15h
	CHAMPION & RESERVE CHAMPION LED GALLOWAY
7.	Led Small Open Pony under 12.2h
8.	Led Small Hunter Pony under 12.2 h
9.	Led Large Open Pony 12.2h & not over 14h
10.	Led Large Hunter Pony 12.2h & not over 14h
	CHAMPION & RESERVE CHAMPION LED PONY
	SUPREME LED HORSE OF THE SHOW
11.	Ridden Open Hack 15h & not over 15.2h
12.	Ridden Open Hack 15.2h & not over 16h
13.	Ridden Open Hack 16h & not over 16.2h
14.	Ridden Open Hack over 16.2h
	CHAMPION & RESERVE CHAMPION HACK
15.	Ridden Hunter Hack 15h & not over 15.2h
16.	Ridden Hunter Hack 15.2h & not over 16h
17.	Ridden Hunter Hack 16h & not over 16.2h
18.	Ridden Hunter Hack over 16.2h
	CHAMPION & RESERVE CHAMPION HUNTER HACK
	GARY BEATON TROPHY FOR BEST RIDDEN THOROUGHBRED
19.	Off the Track Series Ridden Hack
20.	Off the Track Series Led Hack
21.	Ridden Shetland
22.	Ridden Open Small Pony under 11.2h (Shetlands ineligible)
23.	Ridden Open Small Pony 11.2h & not over 12h
24.	Ridden Small Open Pony 12h & not over 12.2h
25.	Heavyweight Small Open Pony 12.2 & under
26.	Lightweight Small Open Pony 12.2 & under
	CHAMPION & RESERVE CHAMPION SMALL PONY
27.	Ridden Hunter Small Pony under 11.2h (Shetlands ineligible)
28.	Ridden Hunter Small Pony 11.2h & not over 12h
29.	Ridden Hunter Open Pony 12h & not over 12.2h
30.	Heavyweight Small Hunter Pony 12.2h & under
31.	Lightweight Small Hunter Pony 12.2h & under
	CHAMPION & RESERVE CHAMPION SMALL HUNTER PONY
32.	Ridden Open Large Pony 12.2h & not over 13h
33.	Ridden Open Large Pony 13h & not over 13.2h
34.	Ridden Large Open Pony 13.2h & not over 14h
35.	Heavyweight Pony 12.2h & under 14h
36.	Lightweight Pony 12.2h & under 14h
	CHAMPION & RESERVE CHAMPION LARGE PONY
37.	Ridden Large Hunter Pony 12.2h & not over 13h
38.	Ridden Large Hunter Pony 13h & not over 13.2h
39.	Ridden Large Hunter Pony 13.2h & not over 14h
40.	Heavyweight Hunter Pony 12.2h & under 14h
41.	Lightweight Hunter Pony 12.2h & under 14h
	CHAMPION & RESERVE CHAMPION LARGE HUNTER PONY
42.	Ridden Open Galloway 14h & not over 14.2h
43.	Ridden Open Galloway 14.2h & not over 15h
44.	Heavyweight Galloway over 14h & under 15h
45.	Lightweight Galloway over 14h & under 15h
	CHAMPION & RESERVE CHAMPION GALLOWAY

(Ring 1 cont'd on next page)

Ring 1 (cont'd)

<u>Class</u>	<u>Description</u>
46.	Ridden Hunter Galloway 14h & not over 14.2h
47.	Ridden Hunter Galloway 14.2h & not over 15h
48.	Heavyweight Hunter Galloway over 14h & under 15h
49.	Lightweight Hunter Galloway over 14h & under 15h
	CHAMPION & RESERVE CHAMPION HUNTER GALLOWAY
50.	Rider 18 to 21 years
51.	Rider 21 to 30 years
52.	Rider over 30 years
	CHAMPION & RESERVE CHAMPION SENIOR RIDER
	<i>(To be ridden by a child 17 years or under)</i>
53.	Ridden Childs Open Hack over 15h
54.	Ridden Childs Hunter Hack over 15h
	CHAMPION & RESERVE CHAMPION RIDDEN CHILDS HACK
	<u>Billboards Memorial Supreme Ridden Childs Horse of the Show will be awarded a Rug sponsored by Megan Richardson</u>

Ring 2 OPEN CLASSES

9.30 am start Judge: David Warde

<u>Class</u>	<u>Description</u>
55.	Rider 8 years & under - to be led
56.	Rider under 8 years (led competitors ineligible)
57.	Rider 8 years & under 10 years
58.	Rider 10 years & under 12 years
	CHAMPION & RESERVE CHAMPION JUNIOR RIDER
	<i>(Champion Eligible for Supreme Junior Rider)</i>
59.	Rider 12 years & under 14 years
60.	Rider 14 years & under 16 years
61.	Rider 16 years & under 18 years
	CHAMPION & RESERVE CHAMPION INTERMEDIATE RIDER
	<i>(Champion Eligible for Supreme Intermediate Rider)</i>
	Judges 2 & 3 combine in Ring 3
	Supreme Junior Rider
	Supreme Intermediate Rider
62.	Ridden Newcomer Open or Hunter Pony not over 12.2h
63.	Ridden Newcomer Large Pony over 12.2h & not over 14h
64.	Ridden Newcomer Galloway 14h & not over 15h
65.	Ridden Newcomer Small Hack 15h & not over 16h
66.	Ridden Newcomer Large Hack over 16h
	CHAMPION & RESERVE CHAMPION NEWCOMER
	(Anthony McMahon Trophy)
67.	Ridden Open Galloway 14h & not over 14.2h
68.	Ridden Open Galloway 14.2h & not over 15h
	CHAMPION & RESERVE CHAMPION GALLOWAY
69.	Ridden Hunter Galloway 14h & not over 14.2h
70.	Ridden Hunter Galloway 14.2h & not over 15h
	CHAMPION & RESERVE CHAMPION GALLOWAY
71.	Rider 18 years to 21 years
72.	Rider 21 years to 30 years
73.	Rider over 30 years
	CHAMPION & RESERVE CHAMPION SENIOR RIDER
74.	Ridden Open Hack 15h & not over 15.2h
75.	Ridden Open Hack 15.2h & not over 16h
76.	Ridden Open Hack 16h & not over 16.2h
77.	Ridden Open Hack over 16.2h
78.	Lightweight Open Hack over 15h
79.	Heavyweight Open Hack over 15h
	CHAMPION & RESERVE CHAMPION HACK

Ring 2 cont'd on next page

Ring 2 OPEN CLASSES (cont'd)

<u>Class</u>	<u>Description</u>
80.	Ridden Hunter Hack 15h & not over 15.2h
81.	Ridden Hunter Hack 15.2h & not over 16h
82.	Ridden Hunter Hack 16h & not over 16.2h
83.	Ridden Hunter Hack over 16.2h
84.	Heavyweight Hunter Hack over 15h
85.	Lightweight Hunter Hack over 15h
	CHAMPION & RESERVE CHAMPION HUNTER HACK
86.	Ridden Shetland
87.	Ridden Open Small Pony under 11.2h (Shetlands ineligible)
88.	Ridden Open Small Pony 11.2h & not over 12h
89.	Ridden Small Open Pony 12h & not over 12.2h
90.	Heavyweight Small Open Pony 12.2 & under
91.	Lightweight Small Open Pony 12.2h & under
	CHAMPION & RESERVE CHAMPION SMALL PONY
92.	Ridden Hunter Small Pony under 11.2h (Shetlands ineligible)
93.	Ridden Hunter Small Pony 11.2h & not over 12h
94.	Ridden Hunter Open Pony 12h & not over 12.2h
95.	Heavyweight Small Hunter Pony 12.2h & under
96.	Lightweight Small Hunter Pony 12.2h & under
	CHAMPION & RESERVE CHAMPION SMALL PONY
97.	Ridden Open Large Pony 12.2h & not over 13h
98.	Ridden Open Large Pony 13h & not over 13.2h
99.	Ridden Large Open Pony 13.2h & not over 14h
100.	Heavyweight Pony 12.2h & under 14h
101.	Lightweight Pony 12.2h & under 14h
	CHAMPION & RESERVE CHAMPION LARGE PONY
102.	Ridden Large Hunter Pony 12.2h & not over 13h
103.	Ridden Hunter Large Pony 13h & not over 13.2h
104.	Ridden Large Hunter Pony 13.2h & not over 14h
105.	Heavyweight Hunter Pony 12.2h & under 14h
106.	Lightweight Hunter Pony 12.2h & under 14h
	CHAMPION & RESERVE CHAMPION LARGE HUNTER PONY
	<i>(To be Ridden by a Child 17 years or under)</i>
107.	Ridden Childs Open Galloway 14h & not over 15h
108.	Ridden Childs Hunter Galloway 14h & not over 15h
	CHAMPION & RESERVE CHAMPION RIDDEN CHILDS GALLOWAY
	<u>All Child's classes will be eligible for the Billboards Memorial</u>
	<u>Supreme Ridden Childs Horse of the Show which will be Judged</u>
	<u>At the Completions of all Rings in Ring 3</u>

Ring 3 - OPEN

9.30 am start **Judge:** Jodie Van Breugel

<u>Class</u>	<u>Description</u>
109.	Rider 12 years & under 14 years
110.	Rider 14 years & under 16 years
111.	Rider 16 years & under 18 years
	CHAMPION & RESERVE CHAMPION INTERMEDIATE RIDER
	<i>(Champion Eligible for Supreme Intermediate Rider)</i>
112.	Rider 8 years & under - to be led
113.	Rider under 8 years (led competitors ineligible)
114.	Rider 8 years & under 10 years
115.	Rider 10 years & under 12 years
	CHAMPION & RESERVE CHAMPION JUNIOR RIDER
	<i>(Champion Eligible for Supreme Junior Rider)</i>
	Judges 2 & 3 Combine in Ring 3 for
	SUPREME JUNIOR RIDER (Doug Tremlett Award)
	SUPREME INTERMEDIATE RIDER (William Aitken Award)
116.	Lead Rein Open Pony 12h & under
117.	Lead Rein Hunter Pony 12h & under
118.	First Ridden Open Pony 12h & under
119.	First Ridden Hunter Pony 12h & under
	CHAMPION & RESERVE CHAMPION MINI PONY

RING 3 - OPEN (cont'd)

- | Class | Description |
|-------|---|
| 120. | Ridden Shetland |
| 121. | Ridden Open Small Pony under 11.2h (Shetlands ineligible) |
| 122. | Ridden Open Small Pony 11.2h & not over 12h |
| 123. | Ridden Open Small Pony 12h & not over 12.2h |
| | CHAMPION & RESERVE CHAMPION SMALL PONY |
| 124. | Ridden Hunter Small Pony under 11.2h (Shetlands ineligible) |
| 125. | Ridden Hunter Small Pony 11.2h & not over 12h |
| 126. | Ridden Hunter Open Pony 12h & not over 12.2h |
| | CHAMPION & RESERVE CHAMPION SMALL HUNTER PONY |
| 127. | Ridden Open Large Pony 12.2h & not over 13h |
| 128. | Ridden Open Large Pony 13h & not over 13.2h |
| 129. | Ridden Large Open Pony 13.2h & not over 14h |
| | CHAMPION & RESERVE CHAMPION LARGE PONY |
| 130. | Ridden Large Hunter Pony 12.2h & not over 13h |
| 131. | Ridden Large Hunter Pony 13h & not over 13.2h |
| 132. | Ridden Large Hunter pony 13.2h & not over 14h |
| | CHAMPION & RESERVE CHAMPION LARGE HUNTER PONY |
| 133. | Ridden Open Galloway 14h & not over 14.2h |
| 134. | Ridden Open Galloway 14.2h & not over 15h |
| 135. | Heavyweight Open Galloway over 14h |
| 136. | Lightweight Open Galloway over 14h |
| | CHAMPION & RESERVE CHAMPION GALLOWAY |
| 137. | Ridden Hunter Galloway 14h & not over 14.2h |
| 138. | Ridden Hunter Galloway 14.2h & not over 15h |
| 139. | Heavyweight Hunter Galloway over 14h |
| 140. | Lightweight Hunter Galloway over 14h |
| | CHAMPION & RESERVE CHAMPION HUNTER GALLOWAY |
| 141. | Ridden Open Hack 15h & not over 15.2h |
| 142. | Ridden Open Hack 15.2h & not over 16h |
| 143. | Ridden Open Hack 16h & not over 16.2h |
| 144. | Ridden Open Hack over 16.2h |
| 145. | Heavyweight Open Hack over 15h |
| 146. | Lightweight Open Hack over 15h |
| | CHAMPION & RESERVE CHAMPION HACK |
| 147. | Ridden Hunter Hack 15h & not over 15.2h |
| 148. | Ridden Hunter Hack 15.2h & not over 16h |
| 149. | Ridden Hunter Hack 16h & not over 16.2h |
| 150. | Ridden Hunter Hack over 16.2h |
| 151. | Heavyweight Hunter Hack over 15h |
| 152. | Lightweight Hunter Hack over 15h |
| | CHAMPION & RESERVE CHAMPION HUNTER HACK |
| | <i>(To be Ridden by a Child 17 years or under)</i> |
| 153. | Ridden Childs Open Pony not over 12.2h |
| 154. | Ridden Childs Large Pony over 12.2h & not over 14h |
| 155. | Ridden Childs Hunter Pony not over 12.2h |
| 156. | Ridden Childs Hunter Pony over 12.2h & not over 14h |
| | CHAMPION & RESERVE CHAMPION RIDDEN CHILDS PONY |
| | <u>Billboards Memorial Supreme Ridden Childs Horse of the Show</u> |
| | <u>to be Judged at the Completions of all Rings in Ring 3</u> |
| 157. | <i>Good Hands for Boys & Girls (10 years & under 15 years)</i> |



Ring 4 - BREEDS

10.00 am start Judge: Robert Ralston

Class Description

SHETLANDS

158. Leading Rein Shetland Rider 8 years & under
159. Child Handler 12 years & under
160. Stallion 4 years & over
161. Colt 3 years & under
CHAMPION & RESERVE CHAMPION STALLION / COLT
162. Mare 4 years & over
163. Filly 3 years & under
CHAMPION & RESERVE CHAMPION MARE / FILLY
164. Gelding 9.2 h & under
165. Gelding over 9.2 h & not over 10.2 h
166. Gelding 3 years & under
CHAMPION & RESERVE CHAMPION GELDING

SMALL SHETLANDS 8.2 h & UNDER

167. Led Stallion over 4 years old
168. Led Colt 3 years & under
CHAMPION & RESERVE CHAMPION STALLION / COLT
169. Led Mare 4 years & over
170. Led Filly 3 years & under
CHAMPION & RESERVE CHAMPION MARE / FILLY
171. Led Gelding 4 years & over
172. Led Gelding 3 years & under
CHAMPION & RESERVE CHAMPION LED GELDING
173. Ridden Stallion
174. Ridden Mare/Filly
175. Ridden Gelding
CHAMPION & RESERVE CHAMPION RIDDEN SHETLAND

WELSH PONIES

176. Colt or Stallion A, B, C or D
177. Section A, Mare, Filly or Gelding, any age
178. Section B, Mare, Filly or Gelding, any age
179. Section C, Mare, Filly or Gelding, any age
180. Section D, Mare, Filly or Gelding, any age
CHAMPION & RESERVE CHAMPION WELSH A, B, C or D
181. Led Part Welsh, Stallion or Colt
182. Led Part Welsh, Mare, Filly, not over 12.2 h
183. Led Part Welsh, Mare, Filly, 12.2 h & not over 13.2 h
184. Led Part Welsh, Mare, Filly, over 13.2 h
185. Led Part Welsh Gelding, not over 12.2 h
186. Led Part Welsh Gelding 12.2 h & not over 13.2 h
187. Led Part Welsh Gelding over 13.2 h
**CHAMPION & RESERVE CHAMPION PART WELSH
SUPREME LED WELSH**
188. Ridden Welsh Stallion Sections A, B, C or D
189. Ridden Welsh, Section B, Mare, Filly or Gelding
190. Ridden Welsh, Section C or D, Mare, Filly or Gelding
CHAMPION & RESERVE CHAMPION RIDDEN WELSH A,B,C or D
191. Ridden Part-Bred Welsh Mare, Filly, Gelding, not over 12.2 h
192. Ridden Part-Bred Welsh Mare, Filly, Gelding 12.2 h & not over 13.2 h
193. Ridden Part-Bred Welsh Mare, Filly, Gelding, over 13.2 h
CHAMPION & RESERVE CHAMPION WELSH RIDDEN

AUSTRALIAN STUD SADDLE PONIES (A.S.S.P.)

194. Led C, B, A, Stallion or Colt
195. Led C, B, A, Gelding
196. Led C, B, A, Mare or Filly
CHAMPION & RESERVE CHAMPION LED C.B.A.
197. Led E, Gelding
198. Led D, Gelding
CHAMPION & RESERVE CHAMPION LED E, D, GELDING
199. Ridden C, B, A, Male
200. Ridden C, B, A, Female
CHAMPION & RESERVE CHAMPION RIDDEN C,B,A.
201. Ridden E, Gelding
202. Ridden D, Mare
CHAMPION & RESERVE CHAMPION RIDDEN E, D

ARABIANS

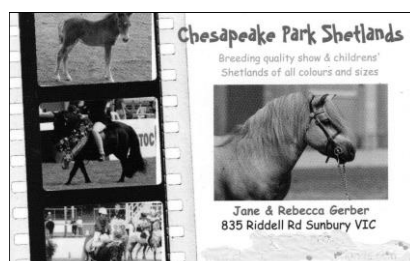
203. Led Pure Bred Stallion 4 years & over
204. Led Pure Bred Mare, 4 years & over
205. Led Pure Bred Male or Female, 3 years & under
CHAMPION & RESERVE CHAMPION PURE BRED ARABIAN

ARABIANS - DERIVATIVES

206. Led Stallion, or Colt
207. Led Mare or Filly
208. Led Gelding
CHAMPION & RESERVE CHAMPION PART BRED ARABIAN
209. Ridden Pure Bred Male
210. Ridden Pure Bred Female
211. Ridden Derivative Male
212. Ridden Derivative Female
CHAMPION & RESERVE CHAMPION RIDDEN ARABIAN

PALOMINOS (sponsored by A.P.H.A.)

213. Best Presented Palomino
214. Best Colour
215. Best Mane & Tail
216. Led Stallion, 4 years & over
217. Led Colt, 3 years & under
CHAMPION & RESERVE CHAMPION LED PALOMINO STALLION / COLT
218. Led Mare, 4 years & over
219. Led Filly, 3 years & under
CHAMPION & RESERVE CHAMPION LED PALOMINO MARE / FILLY
220. Led Gelding 14.2 h & over
221. Led Gelding under 14.2 h
**CHAMPION & RESERVE CHAMPION LED PALOMINO GELDING
SUPREME LED PALOMINO**
222. Ridden Stallion/Colt
223. Ridden Mare/Filly
224. Ridden Gelding
CHAMPION & RESERVE CHAMPION RIDDEN PALOMINO



BUCKSKINS (Sponsored by National Buckskin Society)

Must be Financial Members. All Classes Open to NBS of Affiliate registered horses.

- 225. Best Presented Section A Buckskin
- 226. Handler of Section A
- 227. Dual Registered Section A
- 228. Led Stallion or Colt Section A
- 229. Led Female Section A
- 230. Led Gelding Section A
- CHAMPION & RESERVE CHAMPION LED SECTION A BUCKSKIN**
- 231. Best Presented Section B, C & D
- 232. Handler of Sections B, C & D
- 233. Dual Registered Sections B, C & D
- 234. Led Male, B, C & D
- 235. Led Female B, C & D
- CHAMPION & RESERVE CHAMP LED SECTION B,C&D BUCKSKIN**
- 236. Ridden Male, Section A
- 237. Ridden Female, Section A
- CHAMPION & RESERVE CHAMP RIDDEN SECTION A BUCKSKIN**
- 238. Ridden Male, Sections B, C & D
- 239. Ridden Female, Sections B, C & D
- CHAMPION & RESERVE CHAMPION RIDDEN SECTIONS B,C & D BUCKSKIN**

RING 5 - BREEDS

10.00 am start - **Judge:** Stewie Robinson

RIDING PONIES

- 240. Led Male, 4 years & over
- 241. Led Female 4 years & over
- 242. Led Male or Female 3 years & under
- 243. Led Gelding
- 244. Led Over-Height Riding Pony, over 14.2 h
- CHAMPION & RESERVE CHAMPION LED RIDING PONY**
- 245. Ridden, under 13 h
- 246. Ridden 13 h & under 14.2 h
- 247. Ridden Over-Height, over 14.2 h
- CHAMPION & RESERVE CHAMPION RIDDEN RIDING PONY**

MOUNTAIN & MOORLAND PONIES

- 248. Led Male, 4 years & over
- 249. Led Mare, 4 years & over
- 250. Led Filly, 3 years & under
- 251. Led Male, 3 years & under
- 252. Led Gelding
- CHAMP. & RESERVE CHAMP. LED MOUNTAIN & MOORLAND PONY**
- 253. Ridden Male
- 254. Ridden Female
- CHAMP. & RESERVE CHAMP. RIDDEN MOUNTAIN & MOORLAND PONY**

PINTOS

- 255. Led Male, 4 years & over
- 256. Led Mare, 4 years & over
- 257. Led Male/Female, 3 years & under
- 258. Led Gelding
- CHAMPION & RESERVE CHAMPION LED PINTO**
- 259. Ridden Male
- 260. Ridden Female
- 261. Ridden under 10.2 h
- CHAMPION & RESERVE CHAMPION RIDDEN PINTO**

STANDARD BREDS

- 262. Led Standard Bred Stallion or Colt
- 263. Led Standard Bred Mare or Filly
- 264. Led Gelding
- CHAMPION & RESERVE CHAMPION LED STANDARD BRED**
- 265. Ridden Standard Bred Stallion or Colt
- 266. Ridden Standard Bred Mare of Filly
- 267. Ridden Gelding
- CHAMPION & RESERVE CHAMPION RIDDEN STANDARD BRED**

ALABAR HERO SERIES

- 268. Ridden Standard Bred
(Rug sponsored by Alabar Hero)

ANY OTHER BREED

- 269. Led Stallion or Colt
- 270. Led Mare or Filly
- 271. Led Gelding
- CHAMPION & RESERVE CHAMPION ANY OTHER BREED (LED)**
- 272. Ridden Stallion or Colt
- 273. Ridden Mare or Filly
- 274. Ridden Gelding
- CHAMPION & RESERVE CHAMPION ANY OTHER BREED (RIDDEN)**

PURE BRED CLYDESDALES

- 275. Stallion 4 years & over
- 276. Colt between 2 & 4 years
- 277. Colt, 1 year
- CHAMPION & RESERVE CHAMPION STALLION / COLT**
- 278. Dry Mare 4 years & over
- 279. Brood Mare
- 280. Filly between 2 & 4 years
- 281. Filly, 1 year
- CHAMPION & RESERVE CHAMPION MARE / FILLY
BEST YEARLING (CLASSES 277 & 281)**
- 282. Gelding under 4 years
- 283. Gelding 4 years & over
- CHAMPION & RESERVE CHAMPION GELDING
HARRY BEER SUPREME CHAMPION CLYDESDALE**
- 284. Pair of Horses by One Sire
- 285. Group of Three (not necessarily the one owner)
- 286. Single Farm Horse Driven in Long Reins
- 287. Junior Handler under 16 years (accompanied by adult if required)
- 288. Ridden Pure Clydesdale not over 15.2 h
- 289. Ridden Pure Clydesdale over 15.2

PART-BRED CLYDESDALES (to follow on from Pure-Bred Clydesdales)

- 290. Best Handler, any age
- 291. Best Presented
- 292. Led Gelding, any age
- 293. Led Mare or Filly, any age
- 294. Led Stallion or Colt, any age
- CHAMPION & RESERVE CHAMPION LED PART-BRED CLYDESDALE**
- 295. Ridden Stallion
- 296. Ridden Gelding not over 15.2 h
- 297. Ridden Gelding over 15.2 h
- 298. Ridden Mare not over 15.2 h
- 299. Ridden Mare over 15.2 h
- CHAMPION & RESERVE CHAMPION RIDDEN PART-BRED CLYDESDALE**
- 300. Best Educated
- 301. Pleasure

AUSTRALIAN STOCK HORSES

All classes open to all registered or foal recorded A.S.H.
Registration Papers and Memberships to be produced on request

<u>Class</u>	<u>Description</u>
302.	Led Stallion, 4 years & over
303.	Led Gelding, 4 years & over
304.	Led Colt or Gelding, 3 years & under CHAMPION & RESERVE CHAMPION LED A.S.H. MALE
305.	Led Mare, 4 years & over
306.	Led Filly, 3 years & under CHAMPION & RESERVE CHAMPION LED A.S.H. FEMALE SUPREME CHAMPION LED STOCK HORSE
307.	A.S.H.L.A. - Must be financial member of A.S.H.L.A. to compete
308.	Novice Ridden
309.	Ridden, 3 years & under
310.	Junior Ridden, 14 years & not over 18 years
311.	Ridden Mare
312.	Ridden Stallion
313.	Ridden Gelding CHAMPION & RESERVE CHAMPION RIDDEN A.S.H.
314.	Novice Working
315.	Working, 3 years & under
316.	Junior Working, 18 years & under
317.	Working Mare
318.	Working Stallion
319.	Working Gelding CHAMPION & RESERVE CHAMPION WORKING A.S.H.

TERRY O'BRIEN / PADDY LEYDEN TROPHY for SUPREME A.S.H.

(Donated by Mrs Joan Houston in memory of her Grandfather and Great Uncle)

320.	Pleasure Horse
321.	Station Horse

SUPREME LED (ALL BREEDS) FROM RINGS 4 & 5
SUPREME RIDDEN (ALL BREEDS) FROM RINGS 4 & 5
(All Champions from Rings 4 & 5 eligible to compete)



RING 6 - HARNESS

Approx. 12.00 start. **Judge:** Lorraine Hackwill

<u>Class</u>	<u>Description</u>
322.	Driven Shetland, 10.2 h & under
323.	Shetland Turnout, Jinker or Viceroy
324.	Novice Horse or Pony
325.	Non-Hackney, under 14 h
326.	Non-Hackney, 14 h & over
CHAMPION & RESERVE CHAMPION NON-HACKNEY HORSE OR PONY	
327.	Hackney Pony, not over 14 h
328.	Hackney, 14 h & over
CHAMPION & RESERVE CHAMPION HACKNEY HORSE OR PONY	
329.	Viceroy, Buggy or Jinker Turnout
330.	Tradesman's Turnout, 2 or 4 wheels (Points: Horse (45), Vehicle (30), Harness (15), Overall (10))
331.	Delivery Horse, Medium / Light
332.	Delivery Horse, Heavy
CHAMPION & RESERVE CHAMPION DELIVERY HORSE	

SUPREME HARNESS HORSE / PONY SASH

TOPSY RING

To be judged at lunchtime. **Judge** - Krystal Dennison

This ring is for Novice, Non-gymkhana show-goers (no jackets allowed)
Entrants may compete in Pony Club ring but not Open Rings.
Ribbon prizes only

333.	Neatest & cleanest under 7 years
334.	Neatest & cleanest 7 to 12 years
335.	Neatest & cleanest 13 years & over
336.	Horse / Pony with the longest tail
337.	Horse / Pony with the longest mane
338.	Horse / Pony with the shortest tail
339.	Horse / Pony with the shortest mane
340.	Best Natural Rider under 7 years
341.	Best Natural Rider 8 years to 12 years
342.	Best Natural Rider 13 years & over
343.	Rider with the biggest smile
344.	Pony most like its owner (under 14 h)
345.	Parent rider, to be led by child 10 years & under
346.	Parent rider, to be led by child 11 years & over
347.	School horse / pony (show how quiet your pony is, or any tricks)
348.	Fattest Pony
349.	Led Handler under 7 years
350.	Led Handler 7 to 12 years
351.	Led handler 13 years & over
352.	Fancy Dress 10 years & under
353.	Fancy Dress 11 years & over

CHAMPION & RESERVE CHAMPION HANDLER CHAMPION & RESERVE CHAMPION NATURAL RIDER CHAMPION & RESERVE CHAMPION NEATEST & CLEANEST

Ring 7 - PONY CLUB
9.30 am start **Judge - Jenny Morgan**

Points will be awarded to individual riders (1st - 3pts, 2nd - 2pts, 3rd - 1pt)
No points will be awarded in pairs events, Classes 352 & 353
In the event of a tie, a countback will be done on Rider Classes.

The Pony Club rider with the highest point total on the day will be awarded
an inscribed rug donated by Horseland, Sunbury. In addition, a perpetual Trophy, which
has been donated by *Horseland Sunbury* will be inscribed with the winners name.

Membership Cards must be carried.

One Ride, One Rider rule. 50% Attendance record required.

<u>Class</u>	<u>Description</u>
354.	Pony Club Turnout, rider under 7 years
355.	Pony Club Turnout, rider 7 years & under 10 years
356.	Pony Club Turnout, rider 10 years & under 13 years
357.	Pony Club Turnout, rider 13 years & under 16 years
358.	Pony Club Turnout, rider 16 years & over
359.	Rider under 7 years
360.	Rider, 7 years & under 9 years CHAMPION & RESERVE CHAMPION JUNIOR PONY CLUB RIDER
361.	Rider, 9 years & under 11 years
362.	Rider, 11 years & under 13 years CHAMPION & RESERVE CHAMPION INTERMEDIATE P.C. RIDER
363.	Rider, 13 years & under 15 years
364.	Rider, 15 years & under 17 years
365.	Rider, 17 years & over CHAMPION & RESERVE CHAMPION SENIOR P.C. RIDER

**BRIANA JUDGE MEMORIAL AWARD FOR
SUPREME CHAMPION PONY CLUB RIDER**

366.	Ridden Pony Club Mount, under 12 h
367.	Ridden Pony Club Mount, 12 h & under 13 h
368.	Ridden Pony Club Mount, 13 h & under 14 h CHAMPION & RESERVE CHAMPION P.C. MOUNT UNDER 14 H
369.	Ridden Pony Club Mount, 14 h & under 15 h
370.	Ridden Pony Club Mount, 15 h & over CHAMPION & RESERVE CHAMPION P.C. MOUNT OVER 14 H
371.	Handler, under 10 years
372.	Handler, 10 years & under 14 years
373.	Handler, 14 years & over CHAMPION & RESERVE CHAMPION HANDLER
374.	Pair of Pony Club Riders under 13 years (can be mixed clubs)
375.	Pair or Pony Club Riders 13 years & over (can be mixed clubs)

	
<p>John Gosetti ASA FNTAA Senior Accountant Business Development Manager john.gosetti@suntax.com.au www.suntax.com.au</p>	
<p>Sunbury Essendon P: 03 8746 7700 F: 03 8746 7799</p>	 Suntax Pty Ltd is a CPA Practice



RING 8 - ADULT RIDING

9.00 am start **Judge** - Regina Knobel
Card Secretary: Lorraine Cliffe (0400 278 183)
Entry Fee \$25 (on the day - entitles unlimited class entries)
Ribbons to 4th place, sashes for SOP
Enquiries : Tracey Mackenzie (0410 050 030)

PRIZES: Sashes for SOP, Champion & Reserve.
Ribbons to Fourth Place.
High Point Winner: Sash & Prize

Class Description

376. *Smartest on Parade Levels 1 & 2 & Adv
377. *Smartest on Parade Level 3
378. *Smartest on Parade Level 4
379. *Smartest on Parade Level 5
380. *Ridden Mount Levels 1 & 2
381. *Ridden Mount Level 3
382. *Ridden Mount Level 4
383. *Ridden Mount Level 5
***CHAMPION & RESERVE CHAMPION RIDDEN EXHIBIT
(Classes 380 to 383)**
384. *Rider Levels 1 & 2 & Adv
385. *Rider Level 3
386. *Rider Level 4
387. *Rider Level 5
***CHAMPION & RESERVE CHAMPION HRCV RIDER
(Classes 384 to 387)**
388. *Mount Suitable for HRCV Levels 1&2 & Adv (will be required to jump)
389. *Mount Suitable for HRCV Level 3 (will be required to jump)
390. *Mount Suitable for HRCV Level 4 (will be required to jump)
391. *Mount Suitable for HRCV Level 5 (will be required to jump)
***CHAMPION & RESERVE CHAMPION MOUNT MOST SUITABLE HRCV
(Classes 388 to 391)**
392. Best Educated Mount, Levels Adv & 1 & 2
393. MMS for Beginner Level 3
394. MMS for Beginner Levels 4 & 5

* Denotes classes eligible for Points on Cards

All classes eligible for Highpoint winner on the day.

Points for Highpoint awarded in all classes, including Championships
In the eventuality of equal highpoint placing, a countback will be
conducted to determine the winner:- Order - Placing in the Rider class
followed by placing in the Ridden Mount then MMS

- Ring run under HRCV Rules & Regulations.
Riders must be current members of the Horse Riding Clubs Assoc. of Victoria
Judge's Decision is final
- **Current Membership, Performance Card, and completed HRCV Official Entry Form must be presented to the Card Steward from 8.00 am onwards**
- Riders to supply their own numbers
- Medical Armbands must be worn when jumping