



## FIG TREE POCKET EQUESTRIAN CLUB INC. presents the QOTT CCI ODE

<b>Venue</b>	717 Fig Tree Pocket Road Fig Tree Pocket, 4069 PIC: QGBB0522
<b>Start time</b>	Saturday 20 September 2025 at 8am

**This is a Hendra Vaccinated Event**

### RIDER NOTES

#### 1. EVENT CONTACTS

**For all event enquiries, scratching and yard enquiries:**

- **Event email:** [eventing@ftpequestrianclub.com](mailto:eventing@ftpequestrianclub.com)
- **Event Director:** Heidi Schweikert  
0417 776 883
- **Event Secretary:** Brittany Birch  
0466 960 832
- **Scratchings:** Heidi Schweikert  
0417 776 883
- **Yards and camping:** Laura Parker  
0423 970 454
- **Volunteers:** Kathy Nickels  
0433 431 550

#### 2. COVID19 STATEMENT

- Fig Tree Pocket is operating in accordance with an Industry COVID Safe Plan and will follow Queensland Health directives. <http://www.qld.equestrian.org.au/covid-19>
- Please follow the rules, stay at home if you are unwell, maintain social distancing, wash hands regularly, use sanitizing stations around the grounds and be prepared to leave your contact details for tracing purposes if required.



### 3. HORSE BIOSECURITY:

- All competitors must have completed their Horse Health Declaration online when nominating. Any concerns, please hand in a hard copy form to the Event Secretary upon arrival.
- Failure to complete HHD will result in elimination from competition and may affect future attendance of the grounds.  
<http://www.qld.equestrian.org.au/sites/default/files/HHD%20June%202016%20final.pdf>

### 4. EA EVENT OFFICIALS

- Technical Delegates: Lisa Gall  
Paula Barlow  
Trudy Dougall
- Cross country course designers: Ewan Kellett  
Greg Auer
- Show jumping course designers: Guy Creighton
- Veterinary Delegate: Dr Margaux Markwell
- Treating Vet: Dr Thomas Madigan
- Farrier: Luke Riding
- Chief Medical Officer: Dr Pauline Joubert

### 5. CROSS COUNTRY JUMP STEWARDS

- Cross country jump stewards must be at the large shed at 07:30am for the briefing and to collect XC folders.
- Please bring a hat and chair.
- Food and water will be provided.

### 6. SCRATCHING AND WITHDRAWALS

- All scratchings are to be notified via email to [eventing@ftpequestrianclub.com](mailto:eventing@ftpequestrianclub.com) or to Heidi Schweikert on 0417 776 883.
- The OC applies the EA Rule regarding refunds: NO REFUNDS AFTER CLOSE OF ENTRIES.

### 7. SIGNUP AND VOLUNTEER RIDER LEVY

- We can only run events with a very significant contribution by volunteers and are using SignUp to manage volunteer contributions throughout the weekend.
- Please enter the **Rider's name** or **receipt number** in SignUp when you nominate to receive the \$30 Rider Levy refund.



## 8. EVENT SCHEDULE

- Saturday 20 September 2025**

**Sand arena:**

Ring One: **CCI 3\*** from 8am  
**CCI 2\*** from 8:33am  
**EvA 95B** from 9:40am  
Ring Two: **CCN 1\*** from 8am  
Ring Three: **EvA 95A** from 8am

**Grass XC Arena:**

Ring Four: **EvA 80B** from 8am  
**EvA 80A** from 11:23am  
Ring Five: **EvQ 65A** from 8am  
**EvQ 65B** from 12:34am

**Show jumping CCI 3\*, 2\*, CCN 1\*, EvA 95**

**Sand Arena:**

**CCI 3\*** from 1pm (course walk 12:45pm)  
**CCI 2\*** from 1:40pm (course walk 1:25pm)  
**CCN 1\*** from 2:30pm (course walk 2:15pm)  
**EvA 95A and B** from 4pm (course walk 3:45pm)

- Sunday 21 September 2025**

**Show jumping: EvA 80, EvA 65**

**Sand Arena:**

**EvA 80B and 80A** from 8am (Course walk 7:30am)  
**EvA 65A and 65B** from 11am (Course walk 10:45am)

**All Cross Country – Start time 8:30am in draw order:**

EvA 95A and B (8:30am)  
CCN1\* (9:38am)  
CCN2\* (10:44am)  
CCN3\* (11:18am)  
EvA80B and 80A (11:40pm)  
EvA65A and B (1:01pm)



Riders go out in **NUMBER ORDER**, with the only exception being riders competing more than one horse, where there is a clash.

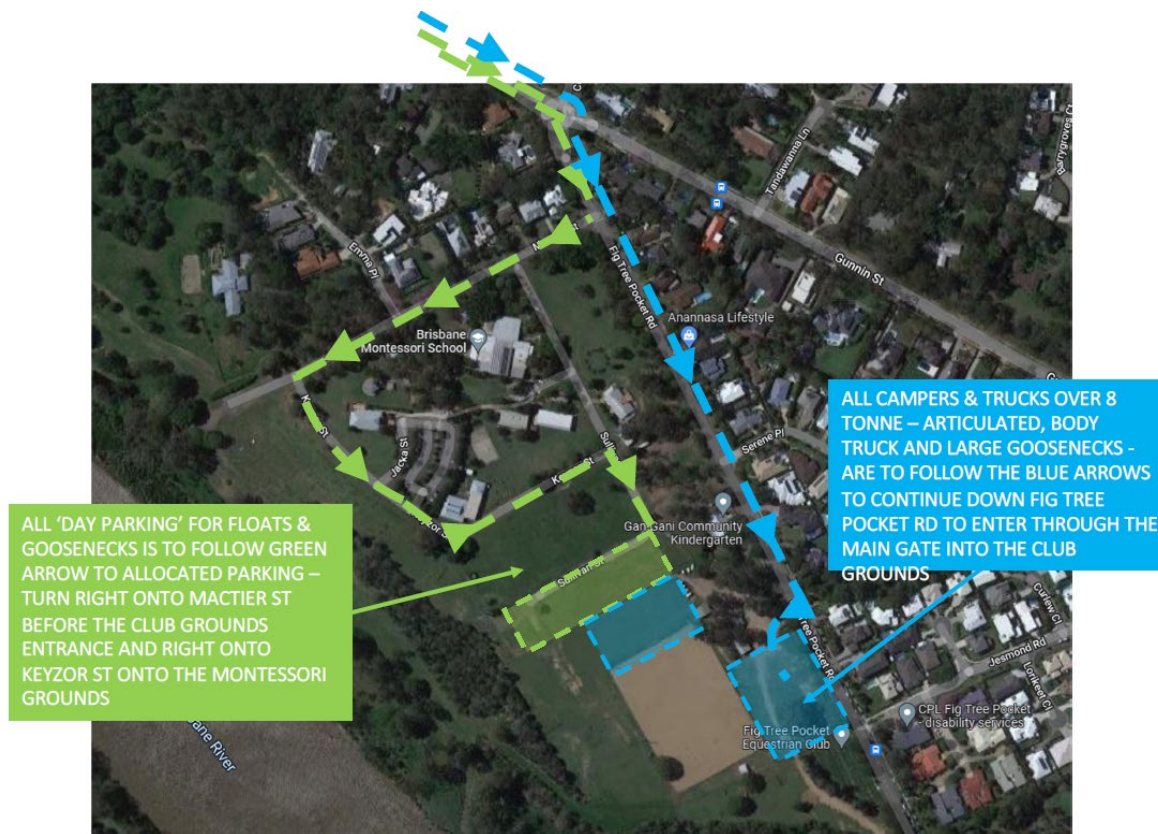
In the event of a clash, please see the Start Marshall to ride **out of order** and **earlier** in your class if possible.

## 9. EA STALLION PROTOCOL

- Please be aware of the 2018 EA Stallion Protocol at this event.
- Please ensure all riders and handlers are following the new safe practices as stipulated by EA.
- Information on this protocol can be found on this link

<http://www.equestrian.org.au/stallion-safe-practice>

## 10. PARKING



- All competitors whether DAY parking or CAMPING must park on FTPEC grounds (or Montessori ground highlighted in green, hired by FTP) ONLY.
- Please note that competitor vehicles that are not engaged in towing vehicles are to be parked on Fig Tree Pocket Road only.
- Spectator and volunteer vehicles park on Fig Tree Pocket Road only.
- Only Officials' vehicles permitted on the grounds.
- All competitors and associates are expected to follow ALL directions given to them by the Parking Attendants, who will be stationed near or on the parking areas. Their direction is FINAL. Non-compliance with their directions will result in the competitor being eliminated from the event and asked to vacate grounds.
- There is ONE SPACE allocated per Competitor, failure to park where you are asked will mean not everyone will fit in.
- Please be respectful of our parking attendants and comply with the directions given.
- Day parking in GREEN ZONE ONLY, via Mactier Street
- Campers enter via 717 Fig Tree Pocket Road, main entry.



- Unpowered camp sites, please turn right after entering gate towards paddock running beside arena, BLUE ZONE, park on boundary fence line.
- Powered camp sites are also in this BLUE ZONE, on the arena fence or in the MAIN CARPARK BLUE ZONE (Trucks and large Goosenecks only in main carpark). Only competitors with powered camping permits may park in these areas.

## 11. CAMPING

- Camping spots are pre-allocated.
- Park in allocated camping spots as directed by parking attendants, in BLUE ZONES. Vehicle size dependent, parking attendants will direct you to the appropriate section in the BLUE ZONES.
- Please display camp permit on the windshield of your car/truck. These will be checked by parking attendants as they direct you to your parking place.
- Campers must tack up in yards, there is no space between parked campers.

## 12. YARDS AND HOUSEKEEPING

- Portable yards are not to be erected and electric fences are not permitted.
- All competitors who have booked yards, must tack up in their yards. There is no space at their floats whether Day Parking or Camping.
- Yards are pre-allocated, please refer to your allocated yard number and the yard map at entry to yards.
- We have exceeded the number of timber yards available, so will be using temporary yards near the sand arena in the small paddocks and also behind the wash bay.
- All riders have an obligation to notify the Organising Committee if they have an aggressive horse and to request a stallion yard or similar, to ensure that the aggressive horse is yarded separately from other horses for the safety of all horses on the grounds.
- The Yard Bond is refundable if yards are undamaged and left free of all feed, hay, and manure.
- The Yard Bond will be refunded via Nominate post event, after inspection by a representative of the Organising Committee. Refund is solely at the Organising Committee's discretion.
- Yards will be inspected at 5pm Sunday afternoon. Any feed, hay or manure left in the yard, regardless of the amount, will result in the Yard Bond not being refunded. The yard bond will be called on in the event of damage to the timber yards.
- All manure, hay and shavings ONLY must be disposed of in the Skip provided at the entry to the yards. Please DO NOT bag or contaminate the manure with hard feed or general waste. Our skip is going to an organic composter to be recycled.
- For competitors parked in the Mactier Street Day Parking Paddock, please clean your parking bay, and take your manure and hay/feed home with you.





- Please ensure that all rubbish is either placed in bins, on-site Skips or taken home with you.
- Please do not leave it to our hardworking volunteers to clean up, they work tirelessly all weekend to put the event on and do not need the extra work afterwards.

### **13. SCORING**

- We will be using the Nominate system Scoreboard for the event with tablets for the dressage and show jumping phases.
- Riders will be emailed with their dressage test sheet upon completion of their test.

### **14. CROSS COUNTRY MAPS**

- Will be available at the Secretary's tent and online via the Cross Country app once the course has been approved by the Ground Jury and Technical Delegates and opened for walking. Please make sure you download it.

### **15. HELMET TAGGING**

- All riders must have their helmet tagged before competing.
- We will be offering helmet tagging, so if you need yours tagged please come see the Event Secretary at the canteen.

### **16. BACK NUMBERS**

- Riders will be emailed their back numbers prior to the event and are required to print out two copies.

### **17. HOT WEATHER POLICY**

- Consideration will be given to summer dress (no jacket) if temperatures exceed 25 degrees. Iced water will be offered at the completion of cross country for use to cool down horses if the wet bulb index is high enough as per EA's hot weather policy.

### **18. FARRIER**

- A farrier will be in attendance Saturday and Sunday.

### **19. WARM UP AREAS**

- Access to the grass dressage arenas is through the front carpark, then through the main gate out to the XC Course. Please ask an official if you are unsure.
- Sand arena access for dressage warm up is behind the main sand arena on the grass area. Access is via the top car park at the end of the arena.
- Please note that we are running one show jumping ring on Saturday and Sunday with the warm up area also in the sand arena. Access to the show jumping warm up area and access to the ring will be via the back arena gate. There will be gate stewards the warm up area for show



jumping. Please follow their instructions at all times or risk being eliminated from the competition. Their direction is final.

- XC warm up has moved to the first paddock on the XC course. Entry to the warm up is via the road out to the XC course. Please be mindful of other competitors at all times and follow the Warm Up Marshall and Start Marshall's directions at all times.

## **20. USE OF SCOOTERS AND VEHICLES ON CROSS COUNTRY COURSE**

- The Cross Country course must be walked on foot only.
- Permission may be sought from the TD to use a scooter or motorized vehicle for a medical condition.

## **21. DOGS AT THE EVENT**

- Strictly no dogs on the Cross Country Course for the duration of the competition.
- All dogs must always be kept on a leash, in all other precincts at the event.
- It is a requirement that you pick up after your dog.
- Failure to comply with these rules may result in a fine or non-compliant owner being banned from the grounds.

## **22. CATERING**

- Canteen available for Breakfast and Lunch Saturday and Sunday.
- We have arranged food trucks for Saturday evening and the bar is open on Saturday from 2pm to 8pm.

## **23. PRESENTATIONS AND PRIZES**

- We will be conducting rolling presentations throughout the day on Sunday as results are signed off and become available.
- We ask that all place getters be present please and if you receive a prize that you present in competition breeches and jacket and thank your class sponsor.
- Prize money will be issued via EFT after the completion of event.
- We will collect bank details for all places and rug sizes for class Champions at presentation. Payments to third parties will not be made.
- Prize winners may opt to donate their prize back to the club to assist the club in continuing to run events and maintain the beautiful XC course. This gesture would be hugely appreciated. Please advise at presentation if you wish to exercise this option.





**QUEENSLAND  
OFF THE  
TRACK**





QUEENSLAND  
OFF THE  
TRACK



# THE QUEENSLAND OFF-THE-TRACK PROGRAM

Established to support a high quality first transition for Standardbred and Thoroughbred horses from racing and breeding activities to retirement.



QUEENSLAND  
OFF THE  
TRACK



FOR MORE INFORMATION VISIT  
[WWW.RACINGQUEENSLAND.COM.AU/QOTT](http://WWW.RACINGQUEENSLAND.COM.AU/QOTT)



With thanks to our generous class sponsors:

CCI 3\*\*\*



**WestVETS**  
Animal Hospitals &  
Equine Reproduction Centre  
[www.westvets.com.au](http://www.westvets.com.au)

CCI 2\*\*



CCI 1\*





## EvA 95 A and B



## EvA 80 A and B



Sci-Fleet Toyota



## EvQ 65 A and B





Many thanks to our generous prize sponsors:

